

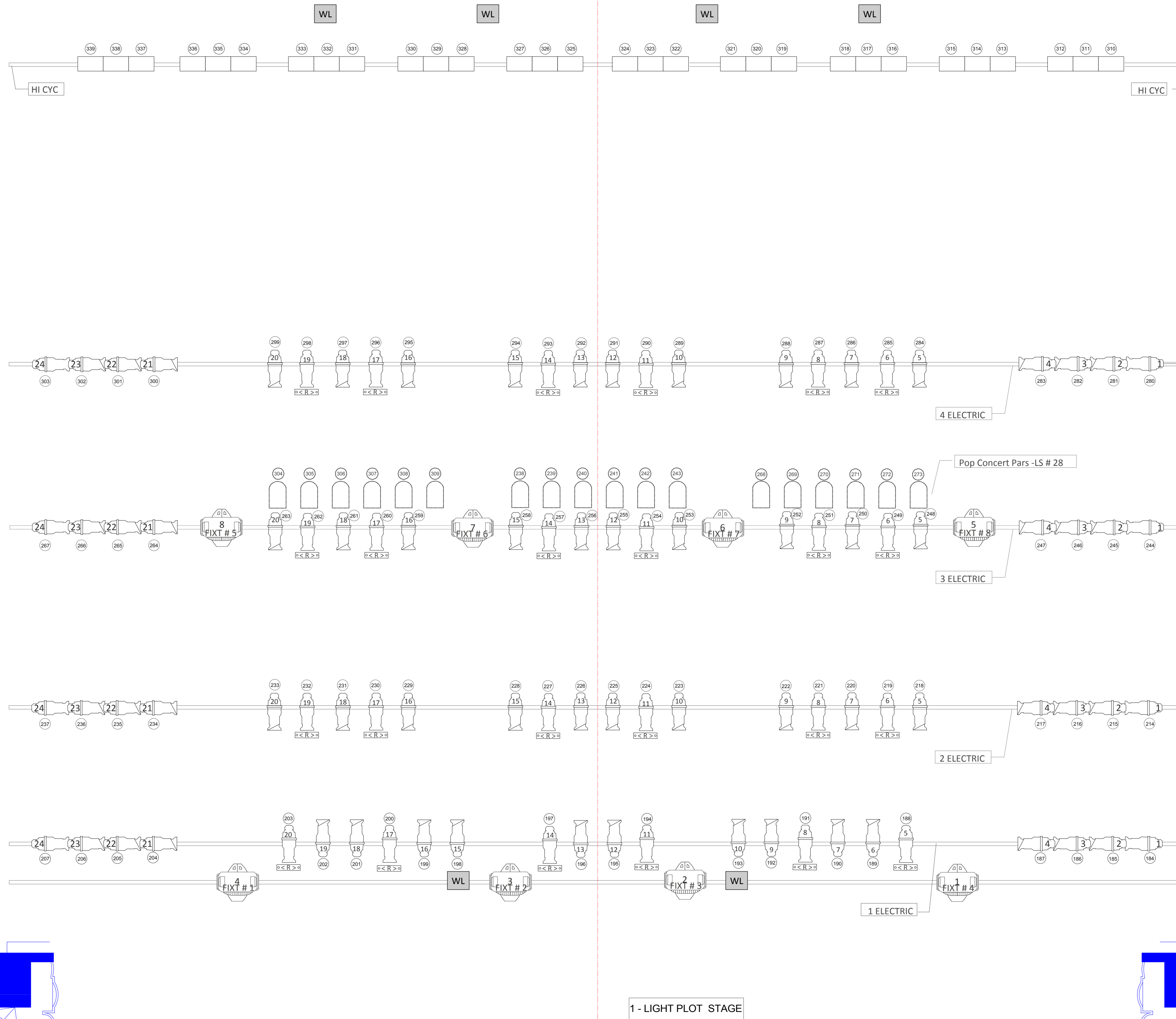
GRANADA THEATRE

KEY

- 10 DEGREE
- 14 DEGREE
- 19 DEGREE
- 26 DEGREE
- 36 DEGREE
- PAR 64 1KW MFL
- 1-CELL FLOOR CYC 1KW
- 3-CELL CYC 1KW
- 5.25" Scroller/Apollo

R=ROSCO STRING (STD.) A=ROCK/ROLL STRING B=THEATRE STRING
 N/C, R68, R64, R62, R51, R34, N/C, 6400, 7600, 7450, 8300, N/C, 6300, 7150, 7650, 7550, 7600,
 R02, R316, R44, R10, R57, R26, 8250, 8750, 3150, 3700, 3900, 8250, 8450, 8750, 3250, 3700, 4800,
 R80, R347, R95, R93, 4450, 4250, 4200, 4550, 5500, 4450, 4400, 5960, 5300,
 5400

HIGH END STUDIO SPOT CMY



1 - LIGHT PLOT STAGE

BLACK OUT	LINE SET #58	41'-10"
WHITE BRZE	LINE SET #57	41'-2"
EMPTY	LINE SET #56	40'-6"
5th E.CYC	LINE SET #55	39'-10"
EMPTY	LINE SET #54	39'-2"
RP CYC	LINE SET #52	37'-10"
EMPTY	LINE SET #51	37'-2"
LEGS	LINE SET #50	36'-6"
BORDER	LINE SET #49	35'-10"
EMPTY	LINE SET #48	35'-2"
EMPTY	LINE SET #47	34'-6"
EMPTY	LINE SET #46	33'-10"
EMPTY	LINE SET #45	33'-2"
EMPTY	LINE SET #44	32'-6"
EMPTY	LINE SET #43	31'-10"
EMPTY	LINE SET #42	31'-2"
LEGS	LINE SET #41	30'-6"
ACO. CEIL.	LINE SET #40	29'-2"
BORDER	LINE SET #39	28'-6"
EMPTY	LINE SET #38	27'-10"
4TH ELEC	LINE SET #37	27'-2"
EMPTY	LINE SET #36	26'-6"
EMPTY	LINE SET #35	25'-10"
EMPTY	LINE SET #34	25'-2"
TRAVELER	LINE SET #32	23'-10"
LEGS	LINE SET #31	23'-2"
BORDER	LINE SET #30	22'-6"
EMPTY	LINE SET #29	21'-10"
EMPTY	LINE SET #28	21'-2"
EMPTY	LINE SET #27	20'-6"
3RD ELEC	LINE SET #26	19'-10"
EMPTY	LINE SET #25	18'-2"
Decommissioned		
ACO. CEIL.	LINE SET #23	17'-10"
EMPTY	LINE SET #22	17'-2"
EMPTY	LINE SET #21	16'-6"
TRAVELER	LINE SET #20	15'-10"
LEGS	LINE SET #19	15'-2"
BORDER	LINE SET #18	14'-6"
EMPTY	LINE SET #17	13'-2"
EMPTY	LINE SET #16	12'-6"
EMPTY	LINE SET #15	11'-10"
2ND ELEC	LINE SET #14	11'-2"
EMPTY	LINE SET #13	10'-6"
EMPTY	LINE SET #12	9'-10"
EMPTY	LINE SET #11	9'-2"
EMPTY	LINE SET #10	8'-6"
LEGS	LINE SET #9	7'-10"
BORDER	LINE SET #8	7'-2"
DEAD HANG ONLY	LINE SET #7	6'-6"
ACO. CEIL.	LINE SET #6	5'-10"
EMPTY	LINE SET #5	5'-2"
1ST ELEC	LINE SET #4	4'-6"
MOVER ELEC	LINE SET #3	3'-10"
EMPTY	LINE SET #2	3'-2"
BORDER	LINE SET #1	2'-6"
MAIN DRAPE		
1'-6"		
LEGS		
A BATTEN		
1'-2"		