

# THE GRANADA THEATRE

Santa Barbara Center for the Performing Arts - 1214 State Street - Santa Barbara CA, 93101

Production/Tech.-Advance- Director of Operations: 805.899-3000 x161

FOH/building Advance- Associate Director of Operations: 805.899.3000 x107

Website: [granadasb.org](http://granadasb.org) Downloads: [TBD](#)

## TECHNICAL SPECIFICATIONS

### House

#### Seating Capacity:

Nominal Cap. 1500

Orchestra- 877

Fixed 852 Loose 25

Accessible Seats:

Transfer Arm- 16

Wheelchair space- 16

Balcony and Box Seats - 661

Fixed 615 Loose 46

Boxes A-D, L&R 32 (4 each)

Loge Box, L&R 14 (7 each)

Removable seats per configuration-

FULL Orch. Pit- 66

SMALL Orch. Pit- 24

Last two rows of Upper Balc.

Row V- 30

Row W- 34

Typical Seat Kills:

Left and Right of FOH audio mix - (auto-reduced from total)

Line-Array Ground stack-Orch. 10/side, Box A 2/side, Box B 2/side

Stage stairs to Audience - 6/stair minimum.

Extra Followspots at rear of Balcony- 4/spot minimum.

### Stage

Proscenium width: 50'

Proscenium height: 29'-6"

Plaster line to back wall 46'-0"

Plaster line to edge of apron: 4' -0"

Plaster line to edge of

Orch. Pit Platform @ Centerline: 15'-0"

Orch. Pit Platform: 11'- 0" x 36'-9"

Stage left minimum wingspace 10'- 1"\*

Stage Right minimum wingspace 32' - 2"

Stage to Grid: 68'-3"

Stage to Fly floors: 0" and 30'-0"

Stage to loading bridges 51' and 61'

### Dressing Rooms and Support Areas

The Granada has 10 dressing rooms on 2 floors: 1 "Diva" dressing room on the Stage level near stage right. Dressing rooms on the basement level; 1 star, 5 principals, 2 choruses, and 1 conductor's, all easily accessible by stairs or elevator. Each room is equipped with showers and restrooms, and paging speaker. Room assignments are at Users discretion. A crew supported wardrobe room available on the basement level. Also located on the lower level; A Rehearsal Room, orchestra pit access, musician staging area, and carpentry/props room, all with paging and program audio throughout.

# THE GRANADA THEATRE

Santa Barbara Center for the Performing Arts - 1214 State Street - Santa Barbara CA, 93101

Production/Tech.-Advance- Director of Operations: 805.899-3000 x161

FOH/building Advance- Associate Director of Operations: 805.899.3000 x107

Website: [granadasb.org](http://granadasb.org) Downloads: [TBD](#)

## Loading / Access

The loading door is located in the Paseo off of Anapamu Street, midway between State and Anacapa Street, and pull thru to Anacapa street exit can be arranged. ONE Vehicle at a time and only within designated loading area. Blocking access of City parking lot or Fire lane not allowed.

**NO LOADING DOCK-** Trucks are required to have ramps or lift gates. Door is upstage right area of stage. Stage door is nearby via ramped walkway. FOH deliveries should use State street entrance with prior arrangement with staff.

Loading Door 10' Wide x 12' high. Stage below grade by 48". Stage equipped with 8'x 8' hydraulic scissor lift, 5,000 lbs capacity. Theater equipped with 2 truck ramps.

## Orchestra pit lift/platform

At the downstage portion of the stage, is a moveable elevator platform that has four levels of operation:

- Level 1- Stage level- 46" above audience level.
- Level 2- Audience level- TYPICAL condition, allowing for use of Rows AA-DD.
- Level 3- Orchestra Pit level- 8'-0" below stage level.
- Level 4- Basement. Grand piano room, and other equipment storage areas.

The orchestra pit has two size configurations:

LARGE: Requires removal of rows AA-DD. -66 seats

SMALL(Using filler platforms): Requires removal of rows AA-BB only.-24 seats.

## Stage Floor

FLOOR IS A RESILIENT SPRUNG FLOOR:

Specified by Sachs-Morgan consultants, NYC.

Base is 1/4" resilient neoprene pads, with 2"x3" "Sleepers" laid on 16" centers over concrete foundation. Over that is a layer of 3/4" plywood laid w/ grain in one direction, then, another layer of 5/8" plywood laid the other direction and then sheathed w/ 1/4" Masonite and painted matte black.

## Downloads of Plans and Inventories

<http://www.granadasb.org/DownloadInformation.aspx>

# THE GRANADA THEATRE

Santa Barbara Center for the Performing Arts - 1214 State Street - Santa Barbara CA, 93101

Production/Tech.-Advance- Director of Operations: 805.899-3000 x161

FOH/building Advance- Associate Director of Operations: 805.899.3000 x107

Website: [granadasb.org](http://granadasb.org) Downloads: [TBD](#)

## Audio/Video Systems

**Policy note:** The Granada Theatre has an internal SPL limit of 96 dB(A), slow response, with peaks of 101dB(A), as measured at the mixing console and calibrated to match at the balcony rail. These limits are fixed in the in-house system, monitored in real time at the mixing console and the balcony rail, and cannot be modified.

- Yamaha PM1D digital mixing console - FOH - 96 inputs
- Yamaha CL5 digital mixing console - Monitor - 48 inputs
- CD/DVD playback
- Under balcony and high balcony fill speakers built in.
- Martin Line Array\*
  - Flown- 2 zones/side.
  - 4 x W8LC (7.5°x120°) & 1 x W8LCD (20°x120°) Left/Right
  - Groundstack- 2 zones/side
  - 2 x W8LC, 1 x W8LCD, and 2 x W8LS subs
  - Dolby Lake and BSS speaker management/processing and Lab Grueden amplification.
- CAT 5 Audio Networking throughout venue.
- Acoustical Drap System in Auditorium.
- Christie DHD 700 DLP Projector.\*\*
- Christie 4230 Digital Cinema System, Blu-Ray and DCP cinema server.
- Stewart RP Cinema screen - 36' wide x 20' high image area.

FOH mix position at rear of house.

**Other Systems:**

- IR Assistive Listening System
- Lobby paging/program
- Backstage paging/pgm monitor
- Prod. communications, Clear-Com, 4-channels, wired only.

\* -Available upon Request.

\*\* -Available at extra cost.

## Lighting

Lighting System Control: GrandMa Lite (Silent version)  
Dimming: Strand C21/Digital Environ  
454 @ 2.4 Kw, 13 @ 6.0 Kw  
Houselights/Worklights: Controlled via touchscreen FOH or Backstage, or by house's console.

The Granada has a Repertory light Plot with Front, Side, Back, specials and Drop/Cyc lighting. See Granada's download page for current plot detail.

## Electrical Power

4 x 400A- 3Ph. w/ doubled neutrals  
Located: 3 @ Dimmer Room SR @ + 30'.  
1 @ Upstage Left.  
1 x 200A- 3 Ph. w/ Isolated Ground (Audio Power)

Updated: 1/6/2017

# THE GRANADA THEATRE

Santa Barbara Center for the Performing Arts - 1214 State Street - Santa Barbara CA, 93101

Production/Tech.-Advance- Director of Operations: 805.899-3000 x161

FOH/building Advance- Associate Director of Operations: 805.899.3000 x107

Website: [granadasb.org](http://granadasb.org) Downloads: [TBD](#)

Located: Downstage Right  
2 x 200A- 3 Ph.

Located: Upstage Right.  
At Grid for Aux. Motor Power.

## Rigging

### Counterweight System

- 58 Linesets on approx. 8" centers. Loft blocks NOT kickable.
- Locking rail Stage Left. All are 5 line sets.
- MAIN DRAPE on separate motorized lineset, controlled DSR.
- 1750 lb. nominal arbor capacity.
- 12" trussed battens 54' long. Extensions NOT possible.
- 3 pipes dedicated to reflective acoustical ceiling system.
- 5 x Electrics are semi non-dedicated pipes.

### Chain Motor System

- 8 x 1-ton motors on 4 trolleybeams over stage.  
(6'3" and 18'-9" L/R of C/L)
- 3 x 1-ton motors for use on 5 trolleybeams over house.  
(C/L, 16' and 24'" L/R)
- 3/side 1-ton motors run SL and SR side light ladder batten.  
(28'-6" from C/L)
- Pendant controls DSR, 30' fly floor, and grid.

## Acoustical Reflective Shell

Wenger Corp. "DIVA" system

9- 12'x 28' Wall units.

3- Over stage ceiling units.

2- Downstage demountable ceiling units (eyebrow).

## Technical Staff Contacts

[stagecoordinator@granadasb.org](mailto:stagecoordinator@granadasb.org)

[audio@granadasb.org](mailto:audio@granadasb.org)

[electrics@granadasb.org](mailto:electrics@granadasb.org)

[carpenter@granadasb.org](mailto:carpenter@granadasb.org)

[wardrobe@granadasb.org](mailto:wardrobe@granadasb.org)

Backstage Phone/Voicemail:

(805) 879-3681 x 160

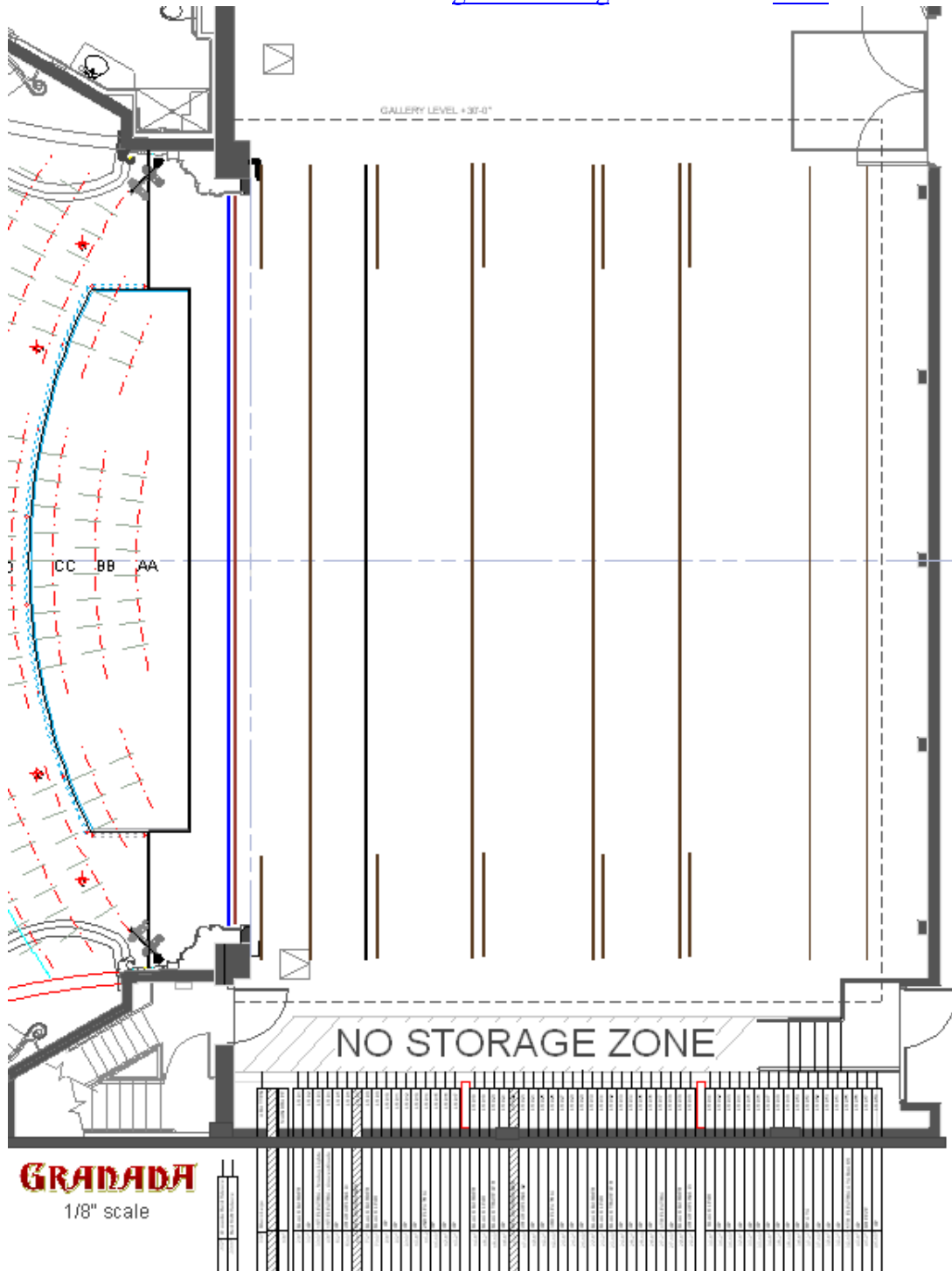
# THE GRANADA THEATRE

Santa Barbara Center for the Performing Arts - 1214 State Street - Santa Barbara CA, 93101

Production/Tech.-Advance- Director of Operations: 805.899-3000 x161

FOH/building Advance- Associate Director of Operations: 805.899.3000 x107

Website: [granadasb.org](http://granadasb.org) Downloads: [TBD](#)



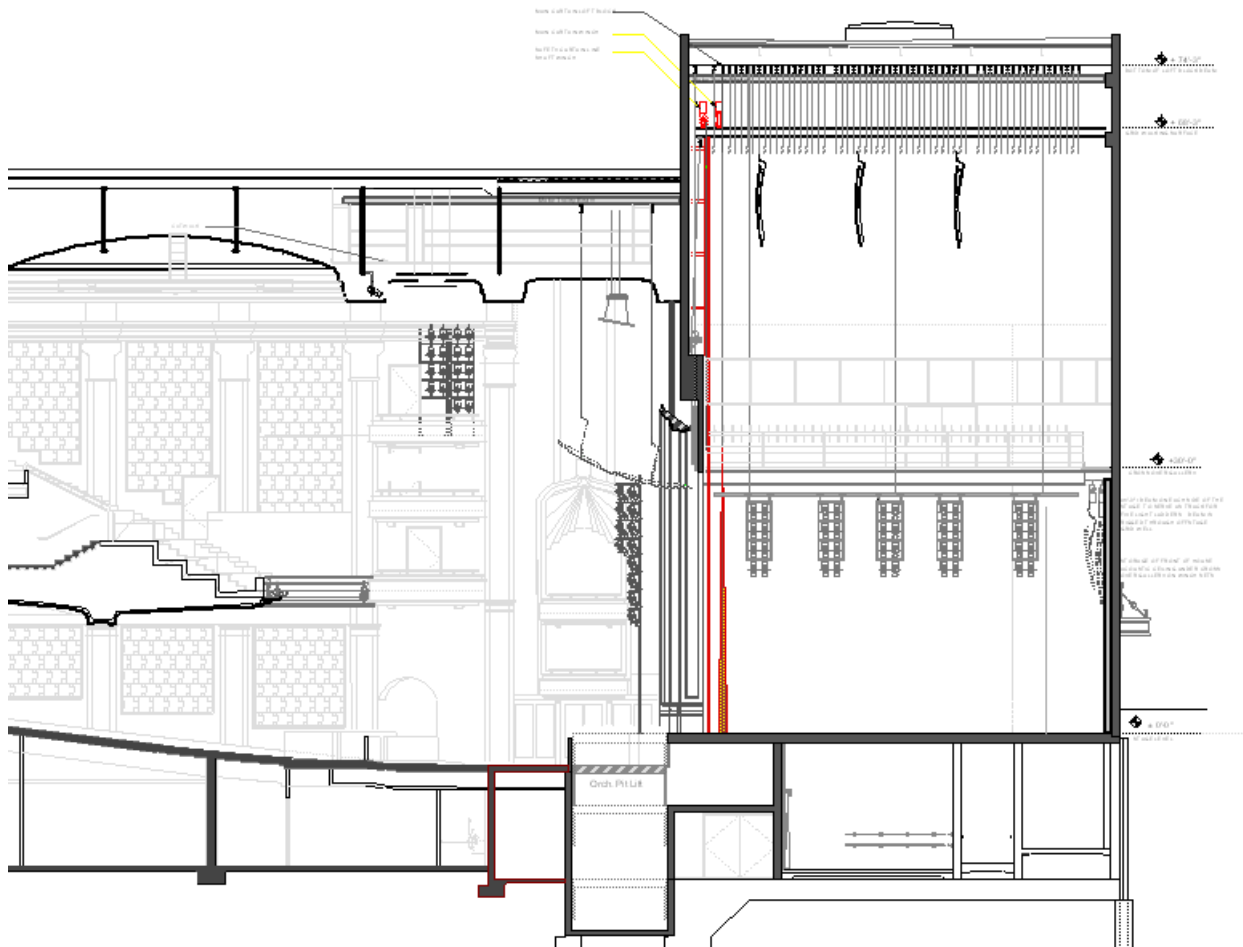
# THE GRANADA THEATRE

Santa Barbara Center for the Performing Arts - 1214 State Street - Santa Barbara CA, 93101

Production/Tech.-Advance- Director of Operations: 805.899-3000 x161

FOH/building Advance- Associate Director of Operations: 805.899.3000 x107

Website: [granadasb.org](http://granadasb.org) Downloads: [TBD](#)



# THE GRANADA THEATRE

Santa Barbara Center for the Performing Arts - 1214 State Street - Santa Barbara CA, 93101

Production/Tech.-Advance- Director of Operations: 805.899-3000 x161

FOH/building Advance- Associate Director of Operations: 805.899.3000 x107

Website: [granadasb.org](http://granadasb.org) Downloads: [TBD](#)



## AUTO DIRECTIONS TO STAGE DOOR.

US 101 NORTH:

CARRILLO EXIT, TURN RIGHT, ONTO CARRILLO

US 101 SOUTH:

CARRILLO EXIT, TURN LEFT ONTO CARRILLO

- Go 7 BLOCKS TO SANTA BARBARA ST. - TURN LEFT.
- GO 3 BLOCKS TO VICTORIA ST. - TURN LEFT .
- GO 1 BLOCK TO ANACAPA ST.(ONE WAY) - TURN LEFT  
AND GET INTO RIGHT LANE !!
- GO 1/4 BLOCK AND TURN RIGHT DOWN DRIVEWAY.

ARTIST ENTRY DOORS ARE GREEN.

# THE GRANADA THEATRE

Santa Barbara Center for the Performing Arts - 1214 State Street - Santa Barbara CA, 93101

Production/Tech.-Advance- Director of Operations: 805.899-3000 x161

FOH/building Advance- Associate Director of Operations: 805.899.3000 x107

Website: [granadasb.org](http://granadasb.org) Downloads: [TBD](#)



## TRUCK DIRECTIONS TO LOADING DOOR.

US 101 NORTH:

CARRILLO EXIT, TURN RIGHT, ONTO CARRILLO

US 101 SOUTH:

CARRILLO EXIT, TURN LEFT ONTO CARRILLO

-GO 4 BLOCKS TO CHAPALA ST. - TURN LEFT.

-GO 2 BLOCKS TO ANAPAMU ST. - TURN RIGHT.

GO 1-1/2 BLOCKS TO MID BLOCK LIGHT AND TURN LEFT INTO PASEO, GO PAST, AND CLEAR OF, PARKING STRUCTURE ENTRANCE AND BEAR TO LEFT SIDE. LOADING DOORS ARE GREEN.

-IF LOCKED, BARRICADE COMBO IS : 1221