



Santa Barbara Center for the Performing Arts 1214 State Street Santa Barbara CA, 93101

Production/Technical information: Dir. of Operations: 805.899-3000 x161

FOH/Safety advance: Associate Director of Operations: 805.899.3000 x107

Facility and delivery coordination Facility Manager: 805.899.3000 x299

Crewing and production advance: Stage Coordinator: 805.758.8554

Website: granadasb.org Specs: granadasb.org/DownloadInformation.aspx email: info@granadasb.org

TECHNICAL SPECIFICATIONS

House

Seating Capacity:

Nominal Cap. 1500

Orchestra- 877

Fixed 852 Loose 25

Accessible Seats:

Transfer Arm- 16

Wheelchair space- 16

Balcony and Box Seats - 661

Fixed 615 Loose 46

Boxes A-D, L&R 32 (4 each)

Loge Box, L&R 14 (7 each)

Removable seats per configuration-

FULL Orch. Pit- 66

SMALL Orch. Pit- 24

Last two rows of Upper Balc.

Row V- 30

Row W- 34

Typical Seat Kills:

Left and Right of FOH audio mix - (auto-reduced from total)

Line-Array Ground stack-Orch. 10/side, Box A 2/side, Box B 2/side

Stage stairs to Audience - 6/stair minimum.

Stage

Proscenium width: 50'

Proscenium height: 29'-6"

Plaster line to back wall 46'-0"

Plaster line to last line set. 41'-10"

Plaster line to edge of apron: 4' -0"

Plaster line to edge of

Orch. Pit Platform @ Centerline: 15'-0"

Orch. Pit Platform: 11'- 0" x 36'-9"

Stage left minimum wingspace 10'- 1"*

Stage Right minimum wingspace 32' - 2"

Stage to Grid: 68'-3"

Stage to Fly floors: 0" and 30'-0"

Stage to loading bridges 51' and 61'

Dressing Rooms and Support Areas

The Granada has 10 dressing rooms on 2 floors: 1 "Diva" dressing room on the Stage level near stage right. Dressing rooms on the basement level; 1 star, 5 principals, 2 choruses, and 1 conductor's, all easily accessible by stairs or elevator. Each room is equipped with showers and restrooms, and paging speaker. Room assignments are at Users discretion. A crew supported wardrobe room available on the basement level. Also located on the lower level; A Rehearsal Room, orchestra pit access, musician staging area, and carpentry/props room, and production office space. All with paging/program audio and Wifi throughout.



Santa Barbara Center for the Performing Arts 1214 State Street Santa Barbara CA, 93101

Production/Technical information: Dir. of Operations: 805.899-3000 x161

FOH/Safety advance: Associate Director of Operations: 805.899.3000 x107

Facility and delivery coordination Facility Manager: 805.899.3000 x299

Crewing and production advance: Stage Coordinator: 805.758.8554

Website: granadasb.org Specs: granadasb.org/DownloadInformation.aspx email: info@granadasb.org

Loading / Access

The loading door is located in the Paseo off of Anapamu Street, midway between State and Anacapa Street, and pull thru to Anacapa street exit can be arranged. ONE Vehicle at a time and only within designated loading area. Blocking access of City parking lot or Fire lane not allowed.

NO LOADING DOCK- Trucks are required to have ramps or lift gates. Door is upstage right area of stage. Stage door is nearby via ramped walkway. FOH deliveries should use State street entrance with prior arrangement with facility staff. Loading Door 10' Wide x 12' high. Stage below grade by 48". Stage equipped with 8'x 8' hydraulic scissor lift, 5,000 lbs capacity. Theater equipped with 2 truck ramps, and use should be discussed at advance.

Orchestra pit lift/platform

At the downstage portion of the stage, is a moveable elevator platform that has four levels of operation:

Level 1- Stage level- 46" above audience level.

Level 2- Audience level- TYPICAL condition, allowing for use of RowsAA-DD.

Level 3- Orchestra Pit level- 8'-0" below stage level.

Level 4- Basement. Grand piano room, and other equipment storage areas.

The orchestra pit has two size configurations:

LARGE: Requires removal of rows AA-DD. -66 seats (Includes 12'x45' area under stage.)

SMALL: (Using filler platforms): Requires removal of rows AA-BB only.-24 seats.

Stage Floor

FLOOR IS A RESILIENT SPRUNG FLOOR:

Specified by Sachs-Morgan consultants, NYC.

Base is 1/4" resilient neoprene pads, with 2"x3" "Sleepers" laid on 16" centers over concrete foundation. Over that is a layer of 3/4" plywood laid w/ grain in one direction, then, another layer of 5/8" plywood laid the other direction and then sheathed w/ 1/4" Masonite and painted matte black.

Downloads of Plans and Inventories

<http://www.granadasb.org/DownloadInformation.aspx>

THE GRANADA THEATRE

Santa Barbara Center for the Performing Arts 1214 State Street Santa Barbara CA, 93101

Production/Technical information: Dir. of Operations: 805.899-3000 x161

FOH/Safety advance: Associate Director of Operations: 805.899.3000 x107

Facility and delivery coordination Facility Manager: 805.899.3000 x299

Crewing and production advance: Stage Coordinator: 805.758.8554

Website: granadasb.org Specs: granadasb.org/DownloadInformation.aspx email: info@granadasb.org

Audio

Policy note: The Granada Theatre has an internal SPL limit of 96 dB(A), slow response, with peaks of 101dB(A), as measured at the mixing console and calibrated to match at the balcony rail. These limits are fixed in the in-house system, monitored in real time at the mixing console and the balcony rail, and cannot be modified.

- FOH- Yamaha PM7 mixing console system with 80x56 I/O running at 48KHz over a Dante 144 channel transport system.
- Monitor- Yamaha CL5 digital mixing console- 48 inputs
- CD/DVD/Qlab playback
- Under balcony and high balcony fill speakers built in.
- Ocean Way Audio Aero Cell PA speaker system
Flown- 1 per side.
JBL VTX Subs on floor if required, or per advance.
Dolby Lake and BSS speaker management/processing.
- CAT 5 Audio Networking throughout venue.
- Acoustical Drape System in Auditorium.

Video

- Christie 4230 Digital Cinema System, Blu-Ray and DCP cinema server (rear projection).
- Stewart RP Cinema screen - 36' wide x 20' high image area.

Other Systems:

- IR Assistive Listening System
- Hearing loop Assistive Listening System
- Lobby paging/program
- Backstage paging/pgm. monitor
- Prod. communications, Clear-Com, 4-channels, wired only.

Lighting

Lighting System Control: GrandMa Lite (Silent version)

Dimming: Strand C21/Digital Environ

454 @ 2.4 Kw, 13 @ 6.0 Kw

Houselights/Worklights: Controlled via touchscreen FOH or Backstage, or by house's console.

The Granada has a Repertory light Plot with Front, Side, Back, specials and Drop/Cyc lighting. See Granada's download page for current plot detail.



Santa Barbara Center for the Performing Arts 1214 State Street Santa Barbara CA, 93101

Production/Technical information: Dir. of Operations: 805.899-3000 x161

FOH/Safety advance: Associate Director of Operations: 805.899.3000 x107

Facility and delivery coordination Facility Manager: 805.899.3000 x299

Crewing and production advance: Stage Coordinator: 805.758.8554

Website: granadasb.org Specs: granadasb.org/DownloadInformation.aspx email: info@granadasb.org

Electrical Power

4 x 400A- 3Ph. w/ doubled neutrals

Located: 3 @ Dimmer Room SR @ + 30'.

1 @ Upstage Left.

1 x 200A- 3 Ph. w/ Isolated Ground (Audio Power)

Located: Downstage Right

2 x 200A- 3 Ph.

Located: Upstage Right.

At Grid for Aux. Motor Power.

Rigging

Counterweight System

- 58 Linesets on approx. 8" centers. Loft blocks NOT kickable.
- Locking rail Stage Left. All are 5 line sets.
- MAIN DRAPE on separate motorized lineset, controlled DSR.
- 1750 lb. nominal arbor capacity.
- 12" trussed battens 54' long. Extensions NOT possible.
- 3 pipes dedicated to reflective acoustical ceiling system.
- 5 x Electrics are semi non-dedicated pipes.

Chain Motor System

- 8 x 1-ton motors on 4 trolleybeams over stage.
(6'3" and 18'-9" L/R of C/L)
- 3 x 1-ton motors for use on 5 trolleybeams over house.
(C/L, 16' and 24' L/R)
- 3/side 1-ton motors run SL and SR side light ladder batten.
(28'-6" from C/L)
- Pendant controls DSR, 30' fly floor, and grid.

Acoustical Reflective Shell

Wenger Corp. "DIVA" system

9- 12'x 28' Wall units.

3- Over stage ceiling units.

2- Downstage demountable ceiling units (eyebrow).

Technical Staff Contacts

stagecoordinator@granadasb.org

audio@granadasb.org

electrics@granadasb.org

carpenter@granadasb.org

wardrobe@granadasb.org

Backstage Phone/Voicemail:

(805) 899-3000 x 160

THE GRANADA THEATRE

Santa Barbara Center for the Performing Arts 1214 State Street Santa Barbara CA, 93101

Production/Technical information: Dir. of Operations: 805.899-3000 x161

FOH/Safety advance: Associate Director of Operations: 805.899.3000 x107

Facility and delivery coordination Facility Manager: 805.899.3000 x299

Crewing and production advance: Stage Coordinator: 805.758.8554

Website: granadasb.org Specs: granadasb.org/DownloadInformation.aspx email: info@granadasb.org



TRUCK DIRECTIONS TO LOADING DOOR.

US 101 NORTH:

CARRILLO EXIT, TURN RIGHT, ONTO CARRILLO

US 101 SOUTH:

CARRILLO EXIT, TURN LEFT ONTO CARRILLO

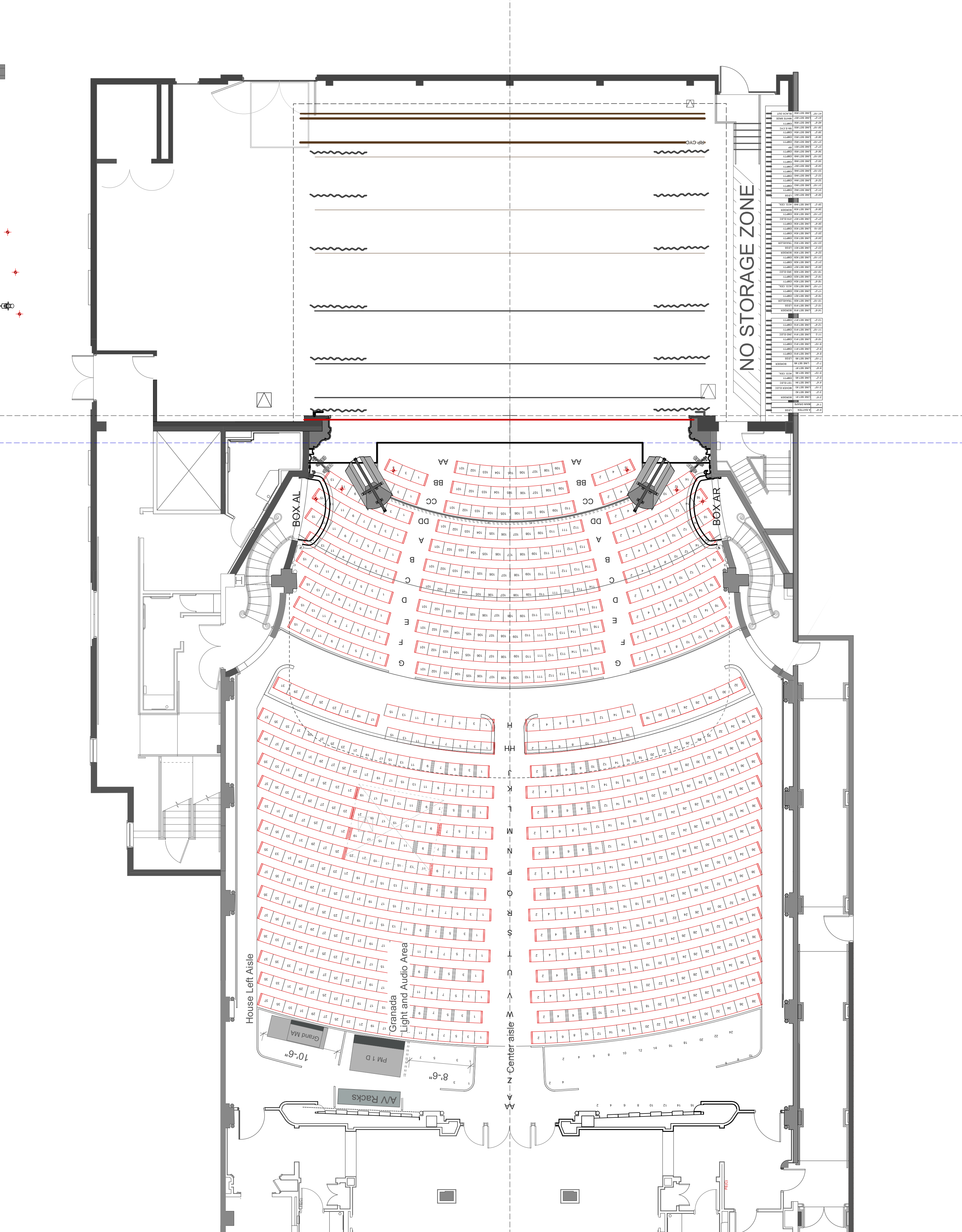
-GO 4 BLOCKS TO CHAPALA ST. - TURN LEFT.

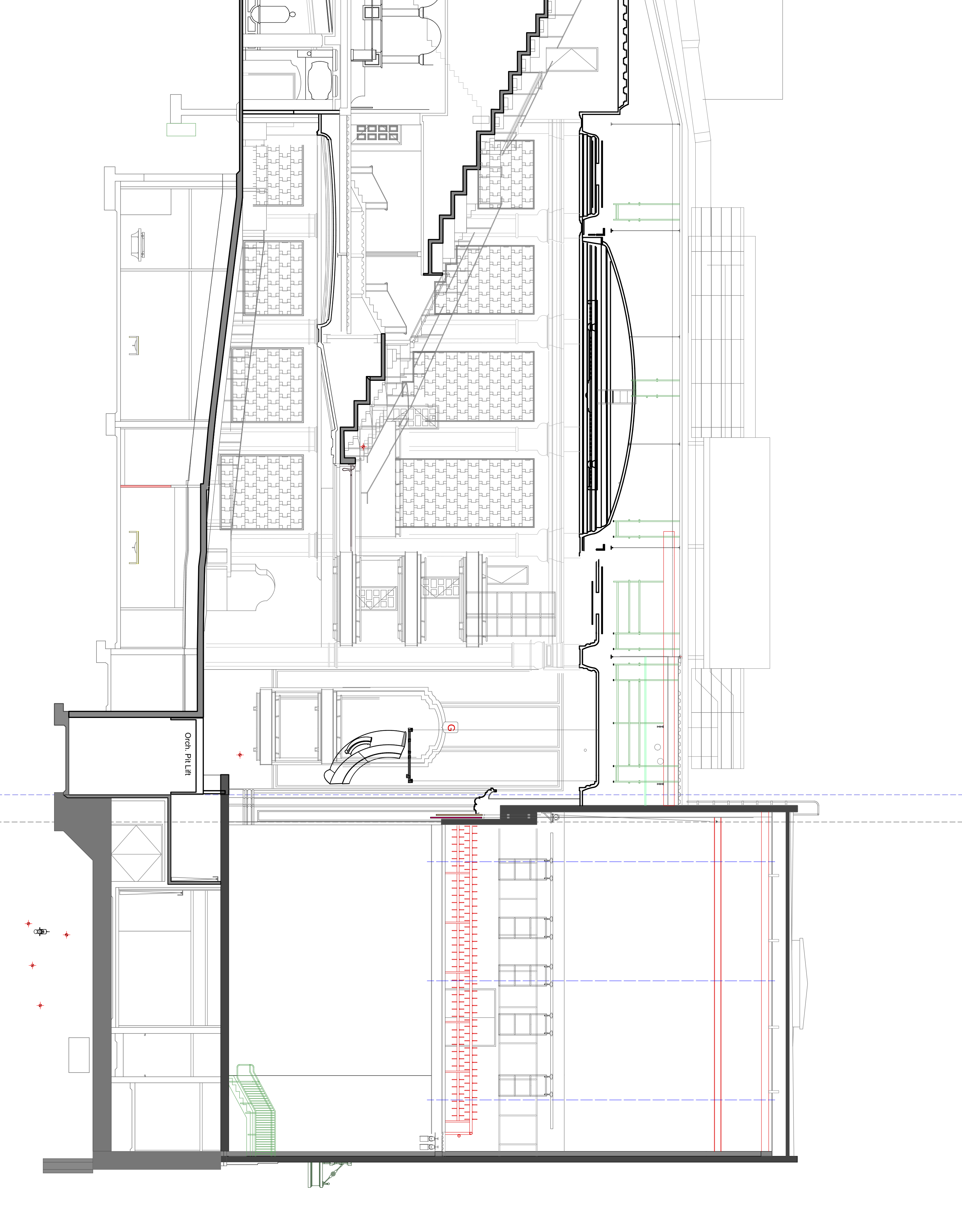
-GO 2 BLOCKS TO ANAPAMU ST. - TURN RIGHT.

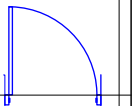
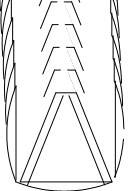
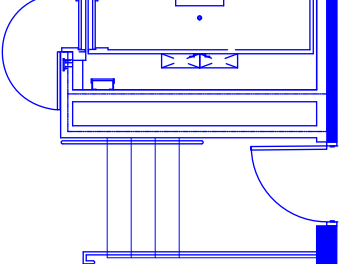
-GO 1-1/2 BLOCKS TO MID BLOCK LIGHT AND TURN LEFT INTO PASEO, GO PAST, AND CLEAR OF, PARKING STRUCTURE ENTRANCE AND BEAR TO LEFT SIDE.

LOADING DOORS ARE GREEN.

-IF LOCKED, BARRICADE COMBO IS : 1221

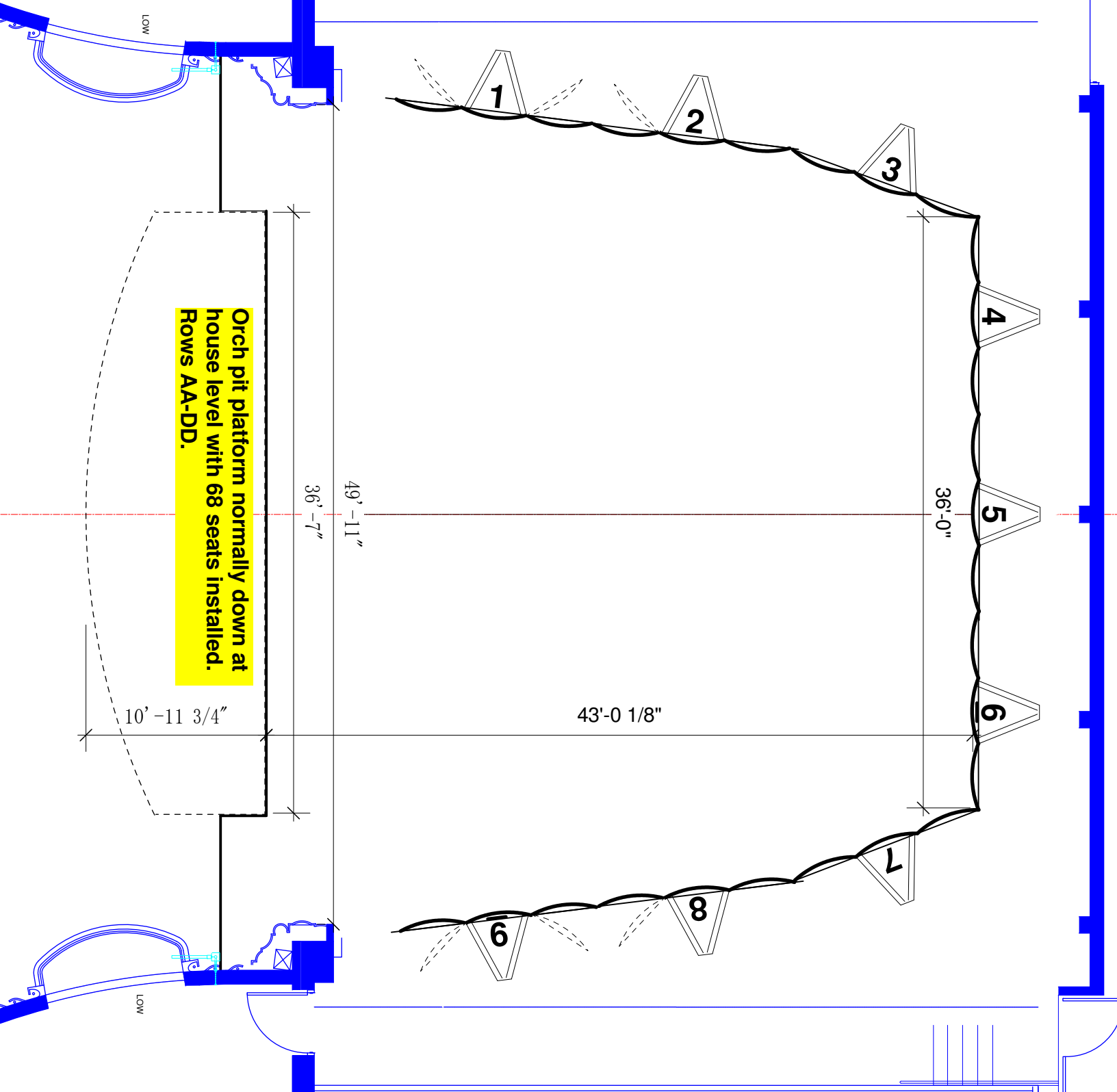






GRANADA THEATER

Santa Barbara, CA



Pipe #	Dim. From Plaster line	House Hang	Notes
0	-1'-2"	Granada Hard Valence	Set at fixed Height
00	-11	RED VELOUR w/GOLD FRINGE Teaser	Drill motor winch
000	6"	Fire Safety Curtain	Motorized
A	1'-2"	Black legs (Flat)	40' opening, TYPICAL
--	1'-6"	Grand Drape	Motorized
1	2'-6"	Black Border (Flat)	
2	3'-2"		
3	3'-10"	1st Electric - 3 moving lights*	
4	4'-6"	1st Electric - Conventional	
5	5'-2"	SHELL CLEARANCE ISSUE	Limited Travel Height
6	5'-10"	Orch. Shell #1	
7	6'-6"	SHELL CLEARANCE ISSUE	Dead hang only
8	7'-2"	Black Border (Flat)	
9	7'-10"	Black legs (Flat)	40' opening, TYPICAL
10	8'-6"		
11	9'-2"		
12	9'-10"		
13	10'-6"		
14	11'-2"	2nd Electric	
15	11'-10"		
16	12'-6"		
17	13'-2"		
18	14'-6"	Black Border (Flat)	
19	15'-2"	Black legs (Flat)	40' opening, TYPICAL
20	15'-10"	Black Traveler (Fullness)	
21	16'-6"		
22	17'-2"	SHELL CLEARANCE ISSUE	Limited Travel Height
23	18'-2"	Orch. Shell #2	
24		Lines set #24 has been removed	
25	19'-2"		
26	19'-10"	3rd Electric	
27	20'-6"		
28	21'-2"		
29	21'-10"		
30	22'-6"	Black Border (Flat)	
31	23'-2"	Black legs (Flat)	40' opening, TYPICAL
32	23'-10"	Black Traveler (Fullness)	

Pipe #	Dim. From Plaster line	House Hang	Notes
33	24'-6"		
34	25'-2"		
35	25'-10"		
36	26'-6"		
37	27'-2"	4th Electric	
38	27'-10"		
39	28'-6"	Black Border (Flat) SHELL CLEARANCE ISSUE	
40	29'-6"	Orch. Shell #3	
41	30'-6"	Black legs (Flat) SHELL CLEARANCE ISSUE	40' opening, TYPICAL
42	31'-2"		
43	31'-10"		
44	32'-6"		
45	33'-2"		
46	33'-10"		
47	34'-6"		
48	35'-2"		
49	35'-10"	Black Border (Flat)	
50	36'-6"	Black legs (Flat)	40' opening, TYPICAL
51	37'-2"		
52	37'-10"	RP CYC/SCREEN*	
53	38'-6"		
54	39'-2"		
55	39'-10"	5th Elec. (CYC Batten BACKS)*	8 x 3-cell cyc fixtures
56	40'-6"		
57	41'-2"	Breeze (bleached white cyc)*	
58	41'-10"	Flat Black (2 panel drape)	
*Unit locations subject to change			